



Solar Inverter from Delta - The heart of your PV system



Content



About us	1
SI 2000	2
SI 2500	4
SI 3300	6
SI 5000	8
CI 100	10
Solar accessories	12

About us

Delta Electronics Group (founded 1971) is the world leader in manufacturing internal switch-mode power supplies and an important supplier of video displays and electronic components for computers, telecommunication, networking and other industrial sectors.

Delta has been steadily growing by 38.39% each year since 1971. In 2008, Delta achieved a turnover of \$5.3 billion US. More than 50,000 staff work for Delta all over the world in sales, development and production.

Delta Electronics has been successfully supporting environmental protection and the development of energy-saving technologies for many years. At the centre of the company's activities is the designing of new equipment with steadily improving efficiencies, low no-load losses and high reliability. These efforts are further strengthened by investment in renewable energies such as photovoltaics and distributed energy generation (e.g. fuel cells).

Delta Energy Systems (Germany), a subsidiary of the multinational Delta family, is a world-wide market leader of custom and standard power supplies for the computer industry as well as telecommunication, medical technology and industrial applications.

Delta Energy Systems has been investing in the research and development of solar inverter programs at its German location since 1999. The result of this is something to be proud of – reliable solar inverters with high efficiencies and state-of-the-art high-frequency topology.

Because of the advanced design of the casing, Delta solar inverters are suitable for both indoor and outdoor applications as well as satisfying all the current guidelines and safety standards.

Our highly motivated and regularly trained solar team is able to offer Delta customers a competent service via the Solar Support Hotline set up especially for this purpose.

Do you need detailed information about the solar inverter? No problem! Our Delta Solar Team arranges special inverter training courses which can be run either on our premises or on your premises on request. Our Solar Team will be pleased to provide you with more details about the different options.

Delta solar inverters are supplied with a standard 5-year guarantee which, of course, can be extended to 10 years (price on request).

When purchased in larger numbers, you can acquire the OEM version of our solar inverters with your company logo.

Delta has invested in state-of-the-art production facilities in Slovakia to manufacture the solar inverter product range. We have been operational in Slovakia for many years, using total quality systems to produce high quality power supplies for the complex requirements of medical engineering applications, for example.

In April 2007, Delta opened a new state-of-the-art production facility on a 7.2 hectare site in Nova Dubnica (Slovakia) with a production area of 12,000 m² where high quality standards continue to be implemented due to the company's production expertise and tight control of production processes. Our production engineers are involved right from the start in the product development. We are convinced that this is an essential requirement for achieving first-class results.

The new factory is, of course, certificated according to ISO9000/14000, UL, TÜV and CSA.

DeSolar, a subsidiary of Delta and a world leading solar cell provider, mainly specializes in the development of crystalline solar cells and the corresponding production processes which are fully realized using in-house automation systems and equipment.

The close collaboration of Delta with DeSolar enables it to develop even more efficient technologies and products, thus giving extra impetus to the spread of solar energy use.

Maximise the efficiency of your solar installation by using the innovative inverter technologies from Delta!



Solar Inverter SI 2000

The Solar Inverter SI 2000 is an inexpensive solution for small solar plants with a maximum module output of 2450 W.

What is impressive about the SI 2000 is that it is simple and only caters for those things which are most important – a high efficiency ac current supply into the public mains at maximum yield and for low capital outlay.

By doing without components which are not necessary for efficient current conversion, such as the display or the communication interfaces, and by cost-optimising the design, we have been able to reduce the price of the converter in comparison with other models without losing any of the most important features.

Thus, with its tried-and-tested resonant converter technology, the transformer unit achieves a peak efficiency of 95.3% and its wide input voltage range means that it is versatile in use. It can also operate over a wide range of temperatures from -25 °C to +60 °C.

INPUT (DC)	
Max. recommended PV power	2450 W
Nominal power	2200 W
Voltage range	125 ... 540 V
MPP range	150 ... 450 V
Full power MPP range	150 ... 450 V
Nominal current	6.9 A
Max. current	15.0 A
Stand-by power	< 0.2 W

OUTPUT (AC)	
Nominal power	2000 W
Max. power	2100 W
Voltage range	196 ... 253 V
Nominal current	8.7 A
Max. current	10.5 A
Nominal frequency	50 Hz
Frequency range	47.5 ... 50.2 Hz

Features

- Transformer with high efficiency (95.3%)
- Isolation of primary and secondary circuit
- Wide operating temperature ranges: -25 °C to +60 °C
- Intelligent MPP tracking
- Suitable for indoor and outdoor applications (IP65)
- Without fan

As with all the solar inverters from Delta, installing the SI 2000 is easy. Use the template provided to draw the drill holes where you want to install the unit.

Fix the screws in the wall and then you only need to hang the solar inverter by the holes provided, tighten the screws and it's ready!

With its IP65 casing, you can also install the SI 2000 solar inverter in protected outside areas. Since it is conductively isolated, personnel protection is guaranteed so the unit can even be installed in the living area – indoors or outdoors, it's up to you!

Delta's SI 2000 is particularly suitable for users who are looking for an inexpensive solar inverter for smaller solar installations such as those for single-family homes.

GENERAL SPECIFICATION	
Max. efficiency	95.3 %
Efficiency EU	93.8 %
Operating temperature	-25 ... +60 °C
Storage temperature	-25 ... +80 °C
Humidity	0 ... 95 %

MECHANICAL DESIGN	
Size (L x W x D)	443 x 335 x 150 mm
Weight	14.0 kg
Cooling	Convection, no fan connection
AC connector	Binder / Amphenol C16-1
DC connector	1 Tyco Solarlok
Communication interfaces	Without communication interfaces
Display	3 LEDs

STANDARDS	
Protection degree	IP65
Safety class	1
Configurable trip parameters	No
Insulation monitoring	Yes
Overload behavior	Current limitation; power limitation
Safety	EN60950-1 / EN50178
	IEC62103, IEC62109-1 / -2
ENS	DIN VDE 0126-1-1, RD 1663
	DK 5940 Ed. 2.2

DIRECTIVES	
EMC	EN55022 Class B
	EN61000-4-2
	EN61000-4-3
	EN61000-4-4
	EN61000-4-5
	EN61000-4-6
	EN61000-4-8

SI 2500



Solar Inverter SI 2500

The second generation of high-efficiency, grid-connected SI 2500 solar inverters offers some innovations.

For example, the efficiency of the SI 2500 has been increased by up to 95.5% with the well-proven resonant converter topology. Another interesting feature of the 2nd generation SI 2500 is the expanded input voltage range up to 540 V.

These technical enhancements enable the solar inverter to provide an even more efficient supply while making it more versatile to suit different installation configurations.

As with all the solar inverters from Delta, installing the SI 2500 is easy. Use the template provided to draw the drill holes where you want to install the unit. Fix the screws in the wall and then you only need to suspend the solar inverter by the holes provided, tighten the screws and it's ready!

INPUT (DC)	
Max. recommended PV power	3100 W
Nominal power	2750 W
Voltage range	125 ... 540 V
MPP range	150 ... 450 V
Full power MPP range	150 ... 450 V
Nominal current	8.6 A
Max. current	18.3 A
Stand-by power	< 0.2 W

OUTPUT (AC)	
Nominal power	2500 W
Max. power	2620 W
Voltage range	196 ... 253 V
Nominal current	10.9 A
Max. current	12.8 A
Nominal frequency	50 Hz
Frequency range	47.5 ... 50.2 Hz

Features

- Transformer with high efficiency (95.6%)
- Isolation of primary and secondary circuit for additional safety
- Wide operating temperature ranges: -25 °C to +60 °C
- RS485 (EIA485) communication interfaces
- Intelligent MPP tracking
- Suitable for indoor and outdoor applications (IP65)
- Without fan

With its IP65 casing, you can also install the SI 2500 solar inverter in protected outside areas. Since it is electrically isolated, personnel protection is guaranteed so the unit can even be installed in the living area – indoors or outdoors, it's up to you!

The relevant status messages and stored data can be easily called up either directly on the user-friendly display or via your PC which you have previously connected to the WEB'log from Meteocontrol and the solar inverter via the RS485 interface. Because the SI 2500 is compatible with products from Meteocontrol, you can keep an eye on the status of your PV installation and the output from anywhere at any time.

The SI 2500 can be used for any size of installation – particularly suitable for users who are looking for smaller to medium-sized solar installations in applications such as single-family homes.

GENERAL SPECIFICATION	
Max. efficiency	95.6 %
Efficiency EU	94.6 %
Operating temperature	-25 ... +60 °C
Storage temperature	-25 ... +80 °C
Humidity	0 ... 95 %

MECHANICAL DESIGN	
Size (L x W x D)	443 x 335 x 150 mm
Weight	14.0 kg
Cooling	Convection
AC connector	Binder / Amphenol C16-1
DC connector	2 Tyco Solarlok
Communication interfaces	2 Harting RJ45 / RS485
Display	3 LEDs, LCD

STANDARDS	
Protection degree	IP65
Safety class	1
Configurable trip parameters	Yes
Insulation monitoring	Yes
Overload behavior	Current limitation; power limitation
Safety	EN60950-1
ENS	DIN VDE 0126-1-1
	RD 1663
	DK 5940 Ed. 2.2

DIRECTIVES	
EMC	EN55022 Class B
	EN61000-4-2
	EN61000-4-3
	EN61000-4-4
	EN61000-4-5
	EN61000-4-6
	EN61000-4-8



Solar Inverter SI 3300

The SI 3300 solar inverter from Delta has a peak efficiency of 96.0%, so it rightfully occupies first place among inverters with transformer (see Photon Solarstrom magazine 05/2008).

The elegant and compact design of the casing and low noise characteristics of the SI 3300 makes this solar inverter from Delta look good even in living areas. You can of course mount it in protected outside areas as well since the IP65 casing is dust-tight, completely safe to touch (shock proof) and protects the unit from spray water from any direction.

Highly efficient and reliable, with its intelligent MPP tracking, the SI 3300 extracts maximum performance from your solar cells under all operating conditions.

Using the wall bracket supplied, mounting Delta's SI 3300 is no problem, even for the private user.

INPUT (DC)	
Max. recommended PV power	4000 W
Nominal power	3630 W
Voltage range	125 ... 540 V
MPP range	150 ... 450 V
Full power MPP range	150 ... 450 V
Nominal current	13.0 A
Max. current	24.0 A
Stand-by power	< 0.2 W

OUTPUT (AC)	
Nominal power	3300 W
Max. power	3485 W
Voltage range	196 ... 253 V
Nominal current	14.4 A
Max. current	17.0 A
Nominal frequency	50 Hz
Frequency range	47.5 ... 50.2 Hz

Features

- Transformer with peak efficiency (96.0%)
- Isolation of primary and secondary circuit for additional safety
- Wide operating temperature ranges: -25 °C to +70 °C
- RS485 (EIA485) communication interfaces
- Full power up to 57 °C (without derating)
- Intelligent MPP tracking
- Suitable for indoor and outdoor applications (IP65)
- Without fan

As soon as the wall bracket has been mounted where you want it, you only need to suspend the unit in the guide rail on the wall bracket with a single movement – no other drilling is necessary.

All the relevant status messages and stored data can be called up effortlessly either directly on the integrated display or via your PC which you have previously connected to the WEB'log from Meteocontrol and the solar inverter via the RS485 interface. Thanks to the self-explanatory menu, you can quickly navigate through the different status messages and select the required data.

Because the SI 3300 is compatible with products from Meteocontrol, you can keep an eye on the status of your PV installation and the output from anywhere at any time.

The SI 3300 can be used for any size of installation. It is particularly suitable for users who are looking for medium-sized solar installations.

GENERAL SPECIFICATION	
Max. efficiency	96.0 %
Efficiency EU	94.8 %
Operating temperature	-25 ... +70 °C
Storage temperature	-25 ... +80 °C
Humidity	0 ... 98 %

MECHANICAL DESIGN	
Size (L x W x D)	410 x 410 x 180 mm
Weight	21.5 kg
Cooling	Convection
AC connector	Wieland RST2513S
DC connector	4 Tyco Solarlok
Communication interfaces	2 Harting RJ45 / RS485
Display	3 LEDs, LCD

STANDARDS	
Protection degree	IP65
Safety class	1
Configurable trip parameters	Yes
Insulation monitoring	Yes
Overload behavior	Current limitation; power limitation
Safety	EN60950-1
ENS	DIN VDE 0126-1-1
	RD 1663
	DK 5940 Ed. 2.2

DIRECTIVES	
EMC	EN55022 Class B
	EN61000-4-2
	EN61000-4-3
	EN61000-4-4
	EN61000-4-5
	EN61000-4-6
	EN61000-4-8
	EN61000-3-2

SI 5000



Solar Inverter SI 5000

The latest high frequency technology used in the SI 5000 solar inverter enables it to operate at maximum efficiency and guarantees continuous, outstanding energy outputs.

With its IP65 casing, this high-efficiency, grid-connected solar inverter can be used both inside and in protected outside areas.

The bracket into which the SI 5000 is simply suspended after it is fixed to the wall is identical to the one used for the SI 3300 solar inverter from Delta. You can therefore swap over the two units effortlessly.

The user-friendly display makes the unit easy to operate. The relevant status messages and stored data can be easily called up either directly on the illuminated display or via your computer, which you have previously connected to the WEB'log from Meteocontrol and the SI 5000 via the RS485 interface.

INPUT (DC)	
Max. recommended PV power	6000 W
Nominal power	5500 W
Voltage range	125 ... 540 V
MPP range	150 ... 450 V
Full power MPP range	150 ... 450 V
Nominal current	17.2 A
Max. current	36.6 A
Stand-by power	< 0.2 W

OUTPUT (AC)	
Nominal power	5000 W
Max. power	5240 W
Voltage range	196 ... 253 V
Nominal current	22.0 A
Max. current	27.2 A
Nominal frequency	50 Hz
Frequency range	47.5 ... 50.2 Hz

Features

- Transformer with peak efficiency (95.6%)
- Isolation of primary and secondary circuit for additional safety
- Wide operating temperature ranges: -25 °C to +60 °C
- RS485 (EIA485) communication interfaces
- Simple and direct on-screen data display
- Intelligent MPP tracking
- Suitable for indoor and outdoor applications (IP65)

Because the SI 5000 is compatible with products from Meteocontrol, you can keep an eye on the status of your PV installation and the output from anywhere at any time.

The SI 5000 from Delta can be used for any size of installation. It is particularly suitable for users who are looking for a solar inverter for medium-sized to large solar installations.

GENERAL SPECIFICATION	
Max. efficiency	95.6 %
Efficiency EU	94.6 %
Operating temperature	-25 ... +60 °C
Storage temperature	-25 ... +80 °C
Humidity	0 ... 98 %

MECHANICAL DESIGN	
Size (L x W x D)	510 x 410 x 180 mm
Weight	32.0 kg
Cooling	Convection / fans optional
AC connector	Phoenix VARIOCON
DC connector	4 Tyco Solarlok
Communication interfaces	2 Harting RJ45 / RS485
Display	3 LEDs, LCD

STANDARDS	
Protection degree	IP65
Safety class	1
Configurable trip parameters	Yes
Insulation monitoring	Yes
Overload behavior	Current limitation; power limitation
Safety	EN60950-1
ENS	DIN VDE 0126-1-1
	RD 1663
	DK 5940 Ed. 2.2

DIRECTIVES	
EMC	EN55022 Class B
	EN61000-4-2
	EN61000-4-3
	EN61000-4-4
	EN61000-4-5
	EN61000-4-6
	EN61000-4-8
	EN61000-3-2



Central Inverter CI 100

This extreme efficient modular inverter system provides maximum flexibility for a power output of 11 kW to 100 kW and is suitable for all the commonly used solar modules. The system consists of nine high-efficient inverter modules, DC disconnectors, system controllers, and a robust cabinet. Also, if any individual components fail in one of the inverters, a system availability of approximately 90% is guaranteed and the 'redundant system' design of the CI 100 ensures maximum reliability.

The concept of the central inverter CI 100 supports the user when expanding the system to increase output etc. and is very easy to service.

With the latest high frequency technology, the electrically isolated CI 100 from Delta achieves peak efficiencies up to 95.3%.

Highly efficient and reliable, with its intelligent MPP tracking, the central inverter CI 100 gets maximum performance from your solar modules under all operating conditions.

INPUT (DC)	
Max. recommended PV power	120 kW
Nominal power	105 kW
Voltage range	400 ... 900 V
MPP range	450 ... 800 V
Full power MPP range	450 ... 800 V
Max. current	235 A

OUTPUT (AC)	
Nominal power	100 kW (9 x 11 kW)
Nominal voltage	3 NPE x 400 V *
Nominal current	145 A per phase
Max. current	180 A
Nominal frequency	50 Hz *
Frequency range	47.5 ... 52.5 Hz *
	* AC voltage and frequency range will be programmed according to the individual country requirements

Features

- Solutions from 11 kW to 100 kW
- Peak efficiency (95.3%)
- Fail-safe
- Ease of maintenance
- DC voltage range from 400 V to 900 V
- Intelligent MPP tracking
- Wide operating temperature range: -10 °C to +50 °C
- Suitable for indoor operation (IP20)
- User-friendly touch-screen display

Of course, the CI 100 is also fitted with overvoltage protection, heat protection, short-circuit protection and overcurrent protection. Delta's central inverter meets all guidelines regarding safety standards, EMC and national requirements.

The user-friendly menu navigation via the integrated touch screen display makes the unit easy to operate. All the operating states and fault messages on the CI 100 or PV installation can be monitored on the illuminated display or invoked via the RS485 interface. You can therefore get an overview of the different measurement values and system data recorded within a day, week, month or year.

As with all the solar inverters in the product range from Delta, the CI 100 is compatible with the safer'Sun Monitoring System from Meteo-control.

GENERAL SPECIFICATION	
Max. efficiency	95.3 %
Efficiency EU	94.8 %
Operating temperature	-10 ... +50 °C
Storage temperature	-25 ... +60 °C
Humidity	0 ... 95 %

MECHANICAL DESIGN	
Size (L x W x D)	2000 x 1000 x 600 mm
Weight	460.0 kg
Cooling	Fan cooling
AC connector	Terminal connection
DC connector	Terminal connection
DC disconnect	Integrated
Display	5.7" Touch Screen

STANDARDS	
Protection degree	IP20
Safety class	1
Configurable trip parameters	Yes
Insulation monitoring	Yes
Overload behaviour	Current limitation; power limitation
Safety	EN60950-1; EN50178; Draft IEC62109-1/2; IEC 62103
ENS	DIN VDE 0126-1-1 RD 1663; DK 5940 Ed. 2.2

DIRECTIVES	
EMC	EN55022 Class B
	EN61000-4-2
	EN61000-4-3
	EN61000-4-4
	EN61000-4-5
	EN61000-4-6
	EN61000-4-8
	EN61000-3-2

Solar accessories

WEB'log Products - Meteocontrol

Part number Delta	WEB'log products
	WEB'log light + Analog (max. 5 solar inverters; 20 kWp)
	WEB'log light + (local) Ethernet (max. 5 solar inverters; 20 kWp)
	WEB'log light + DSL (max. 5 solar inverters; 20 kWp)
5040001700	WEB'log Basic Analog, incl. power supply
	WEB'log Basic ISDN, incl. power supply
5040002000	WEB'log Basic Ethernet, incl. power supply
	WEB'log Basic DSL, incl. power supply
5040001800	WEB'log Pro Analog, incl. display & power supply
5040002300	WEB'log Pro ISDN, incl. display & power supply
5040001900	WEB'log Pro GSM, incl. display & power supply
5040002600	WEB'log Pro Ethernet, incl. display & power supply
	WEB'log Pro DSL, incl. display & power supply
3081126400	Connect Delta (Easyconnect cable) IP20

Part number Delta	Irradiance sensors
	Irradiance sensor Si-12TC, 0 - 10 V
5040002200	Irradiance sensor Si-12TC-T, 0 - 10 V; incl. temperature
	Irradiance sensor Si-12TC, 0 - 10 V; incl. 30 meter connection cable
	Irradiance sensor Si-12TC-T, 0 - 10 V; incl. temperature and 30 meter connection cable

Part number Delta	GSM data cards
	GSM data card, D1 contract, 24 months
	GSM data card, D2 contract, 24 months



PV plug connectors - Tyco Solarlok

Part number Delta	Plug connectors
	Tyco Solarlok PV connectors, Female cable coupler Plus coded, 2.5 mm ² (AWG 14)
	Tyco Solarlok PV connectors, Female cable coupler Minus coded, 2.5 mm ² (AWG 14)
3072350725	Tyco Solarlok PV connectors, Female cable coupler Plus coded, 4.0 mm ² (AWG 12)
3072350625	Tyco Solarlok PV connectors, Female cable coupler Minus coded, 4.0 mm ² (AWG 12)
3072350525	Tyco Solarlok PV connectors, Female cable coupler Plus coded, 6.0 mm ² (AWG 10)
3072350425	Tyco Solarlok PV connectors, Female cable coupler Minus coded, 6.0 mm ² (AWG 10)



Female Cable Coupler



Male Cable Coupler

Fan - Delta

Part number Delta	Fan
EOE99000124	Fan for SI 2500 G2
EOE99000116	Fan for SI 5000



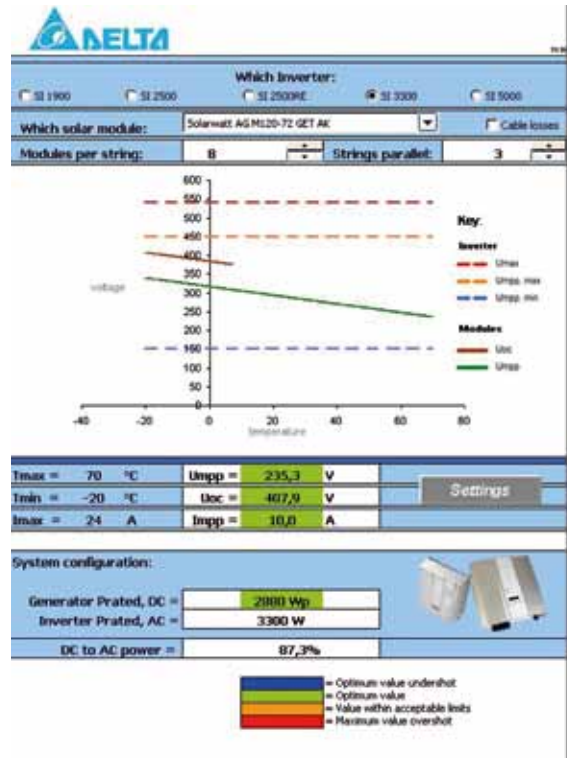
Grounding kit - Delta

Part number Delta	Grounding kit
EOE99000115	Kit for grounding of the solar inverters SI 2500 G2, SI 3300 and SI 5000



Solar configurator - Delta

Part number Delta	Solar configurator
	Tool for planning of solar systems
	Download: www.solar-inverter.com



Connection cable - Harting

Part number Delta	Connection cable
3081129500	<p>Connection cable from Delta solar inverter to WEB'Logger from Meteocontrol:</p> <ul style="list-style-type: none"> - Assembled outdoor cable with Harting RJ45 PushPull and RJ12 plugs, IP65, length of 5 meters - Only suitable for SI 2500 G2, SI 3300 and SI 5000
	<p>Connection cable from inverter to inverter:</p> <ul style="list-style-type: none"> - Harting PushPull system cable RJ45, 8-core for IP65/67 applications, length of 1.5 meters - Only suitable for SI 2500 G2, SI 3300 and SI 5000
	<p>Connection cable from inverter to inverter:</p> <ul style="list-style-type: none"> - Harting PushPull system cable RJ45, 8-core for IP65/67 applications, length of 3.0 meters - Only suitable for SI 2500 G2, SI 3300 and SI 5000
	<p>Connection cable from inverter to inverter:</p> <ul style="list-style-type: none"> - Harting PushPull system cable RJ45, 8-core for IP65/67 applications, length of 5.0 meters - Only suitable for SI 2500 G2, SI 3300 and SI 5000
	<p>Connection cable from inverter to inverter:</p> <ul style="list-style-type: none"> - Harting PushPull system cable RJ45, 8-core for IP65/67 applications, length of 10.0 meters - Only suitable for SI 2500 G2, SI 3300 and SI 5000
	<p>Connection cable from inverter to inverter:</p> <ul style="list-style-type: none"> - Harting push-pull system cable RJ45, 8-core for IP65/67 applications, length of 20.0 meters - Only suitable for SI 2500 G2, SI 3300 and SI 5000



DC disconnecter - Santon

Part number Delta	DC disconnecter
3000184492	Two-pole DC disconnecter, 500V/16A, DC21, IP65 for max. 5 strings, without overvoltage protection, suitable for SI 2500 (1 MPP)
3000183292	Two-pole DC disconnecter, 600V/25A, DC21, IP65 for max. 5 strings, without overvoltage protection, suitable for SI 3300 and SI 5000 (1 MPP)
3000183092	Two-pole DC disconnecter, 1000V/25A, DC21, IP65 for max. 5 strings, without overvoltage protection, suitable for SI 3300 and SI 5000 (1 MPP)
	DC disconnecters with integrated overvoltage protection are available on request





www.solar-inverter.com
www.deltaenergysystems.com

EUROPE

Delta Energy Systems (Germany) GmbH

Tscheulinstrasse 21

D-79331 Teningen

Germany

Sales Email: sales@solar-inverter.com

Support Email: support@solar-inverter.com

Sales Hotline: +49 180 10 SOLAR (76527)

Support Hotline: +49 180 16 SOLAR (76527)

Mondays to Fridays from 8 am to 5 pm (apart from official Bank
Holidays) (3,9 ct/min)

ASIA

Delta Group Headquarter

Delta Electronics, Inc.

186 Ruey Kuang Road, Neihu,

Taipei 114, Taiwan,

Republic of China

Tel: +886 2 8797 2088

Fax: +886 2 8797 2120

Email: kenny.huang@delta.com.tw

Delta Electronics (Japan) Inc.

Osaka Branch Office

9F Shin-osaka Takamitsu Bldg.

Nishinakajima 5-3-4

Yodogawa-ku Osaka Japan

Zip code:532-0011

Tel: +81 6 6101 2530

Fax: +81 6 6101 2531

Email: is.miyazaki@dej.co.jp

www.dej.co.jp

USA

Delta Products Corporation, Inc.

15125 SW Koll Parkway, Suite K

Beaverton,

OR 97006, U.S.A.

Tel: +1 503 533 8444 ext. 108

Mobile: +1 503 703 0208

Fax: +1 503 533 0768

Email: dnasca@delta-corp.com

Delta Products Corporation, Inc.

P.O. BOX 12173

5101 Davis Drive,

Research Triangle Park

NC 27709, U.S.A.

Tel: +1 919 767 3995

Mobile: +1 919 599 9954

Fax: +1 919 767 2454

Email: rcrane@delta-corp.com

SOUTH AMERICA

Delta Energy Systems (Brazil) S/A

Rua Jardim Ivone, 17 Cjs 13/14 - Paraíso

CEP 04105-020

São Paulo - SP - Brasil

Tel: +55 11 3568 3860

Fax: +55 11 3568 3865

Email: paul.mcmahon@delta-es.com

